

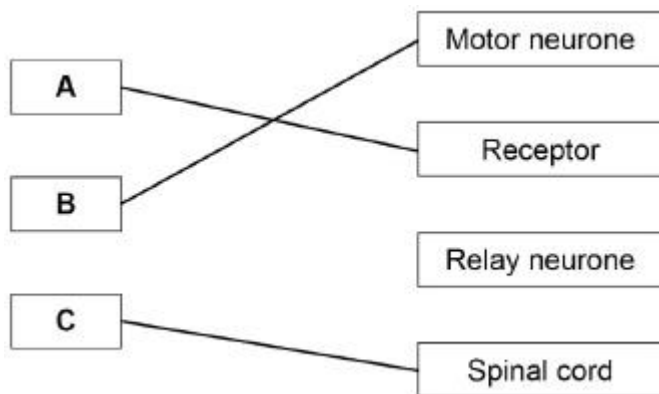
## Mark schemes

## Q1.

- (a) a reflex action is automatic

1

- (b)



do **not** accept more than one line from a box on the left

3

- (c) blinking when an insect flies into the eye

1

removing the hand from a hot object

1

- (d) View with the table  
Mark with (e)

$$\frac{(320 + 304 + 315 + 308 + 313)}{5}$$

$$\text{allow } \frac{1560}{5}$$

1

312

if no other mark awarded allow 1 mark for

$$\frac{315 + 307 + 357}{3} = 326(.3)$$

1

- (e) View with the table  
Mark with (d)

ring drawn around 635 in the table

allow 635 or test 5 (next to question) if no ring drawn on the table

1

(f) any **two** from:

- age
- drugs

*allow a named example of a drug such as alcohol /  
caffeine*

- tiredness / sleep
- sex

*allow gender*

*allow practice at the test **or** playing computer  
games*

*allow distractions*

2

**[11]**